

## INDUSTRIAL HEAT EXCHANGER

# V SERIES

**Multitube. Non removable tube bundle.**

### INDUSTRIAL LINE

Designed both thermal and mechanically to ensure long life and high reliability.

### OPERATION

Standard V Series models consist of a tubular bundle within a shell. The product flows through the inner tubes while the service does it through the outer channel.



### APPLICATIONS

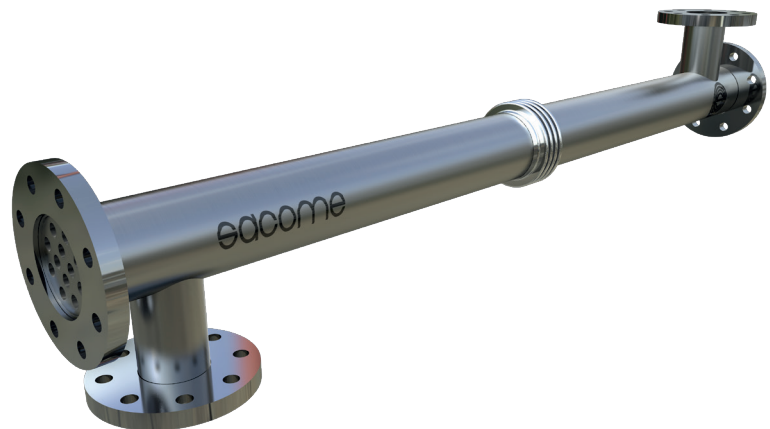
The V Series is designed for heating or cooling fluids such as water, glycol, CIP solutions or sanitary water, among others. Being manufactured against stock and having a compact size allows to be a quick and economical solution.

### ADVANTAGES OF CORRUGATION

- HYGIENIC PROFILE
- DIFFERENT CORRUGATION GEOMETRIES (HARD/SOFT/PLAIN)
- TURBULENT FLOW (LOWER REYNOLDS NUMBER THAN FOR SMOOTH TUBES)
- HIGHER HEAT TRANSFER COEFFICIENTS AND LOWER EXCHANGE AREA
- HOMOGENEOUS THERMAL TREATMENT
- LOWER FOULING
- SHORTER RESIDENCE TIMES
- LONGER RUNNING TIMES

### ADVANTAGES OF TUBULAR HEAT EXCHANGER

- LOW MAINTENANCE COSTS
- HIGH WORKING PRESSURES
- HIGH WORKING TEMPERATURES
- PROCESSING OF PARTICULATE OR FIBRE PRODUCTS
- EASY INSPECTION AND DISASSEMBLY
- HIGH SECURITY IN ASEPTIC PROCESSES
- EASY TO ENLARGE



Discover all the advantages of corrugation in tubular heat exchangers  
[sacome.com/corrugated-tube-heat-exchangers](http://sacome.com/corrugated-tube-heat-exchangers)

## SACOME HEAT EXCHANGER TYPE DEFINITION

**I-V3-24-1-129/18-1500-316L/316L-H**

INDUSTRIAL LINE

**V3**

MULTITUBULAR STANDARD V SERIES

**24**

NUMBER OF INNER TUBES

**0/1**

WITHOUT / WITH EXPANSION JOINT

**129**

Ø SHELL (mm)

**18**

Ø INNER TUBE (mm)

**1500**

NOMINAL LENGTH (mm)

**316L**

SHELL SIDE MATERIAL

**316L**

TUBE SIDE MATERIAL

**H/S/P**

CORRUIGATION INDICATOR  
(HARD / SOFT/ PLAIN)

### STANDARD DESIGN CONDITIONS

Design temperature

**180 °C**

Design pressure

**10 barg**

For higher design pressure or temperatures as well as hazardous fluids, the heat exchangers can be checked according to AD 2000 Merkblätt, ASME VIII Div.1, PD 5500, EN13445 or by Finite Elements Analysis and CE certificated by individual inspection modules.

\* Included: 3.1 Quality certificate and CE Marking according to 2014/68/UE.

### AVAILABLE CONNECTIONS

**Flange EN1092-1**

\* According Image 1 and Table 1

### SURFACE FINISH

External

**Matt**

### OPTIONS

#### INTERCONNECTIONS

In case the equipment contains several units in series, SACOME can provide the interconnections for the product channel and the service channel.

### MATERIALS

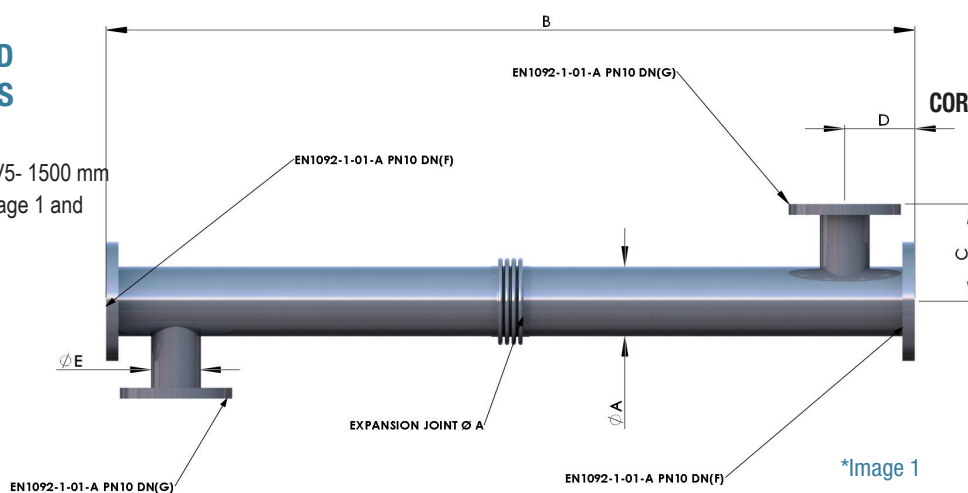
Shell & Tubes

**Stainless Steel 316L**

### STANDARD MEASURES

V0 - 750 mm,  
V1/V2/V3/V4/V5- 1500 mm

\*According Image 1 and  
Table 1



\*Table 1

MODEL	DIMENSIONS (mm)							AREA (m²)	VOLUMEN (L)		EMPTY WEIGHT (Kg)
	A	B	C	D	E	F	G		TUBE	SHELL	
V0	76,2	<b>741</b>	153	<b>91</b>	50,8	65	40	0,25	<b>1</b>	<b>2,3</b>	<b>15</b>
V1	76,2	<b>1441</b>	153	<b>91</b>	50,8	65	40	0,5	<b>1,7</b>	<b>4,2</b>	<b>19</b>
V2	101,6	<b>1441</b>	<b>166</b>	<b>109</b>	76,2	80	65	1	<b>3,5</b>	<b>7,2</b>	<b>29</b>
V3	129	<b>1441</b>	179,5	<b>125,5</b>	88,9	100	80	2	<b>7</b>	<b>10</b>	<b>41</b>
V4	<b>154</b>	<b>1441</b>	199	<b>132</b>	88,9	125	80	3	<b>10,5</b>	<b>14</b>	<b>47</b>
V5	<b>219,1</b>	<b>1441</b>	<b>250</b>	<b>150</b>	<b>139,7</b>	<b>200</b>	<b>125</b>	5	<b>17,5</b>	<b>32</b>	<b>100</b>

**SACOME**

Ctra. de La Unión Km. 3,5 | 30399 Vista Alegre - Cartagena | Murcia | Spain  
Phone: +34 968321411 | Fax: +34 968500003 | Email: [sacome@sacome.com](mailto:sacome@sacome.com) | [www.sacome.com](http://www.sacome.com)