

## INDUSTRIAL HEAT EXCHANGER

# I-TF20-I

**Tube in tube. Non removable inner tube.**

### INDUSTRIAL LINE

Designed both thermal and mechanically to ensure long life and high reliability.

### OPERATION

The I-TF20-I is a monotubular heat exchanger consisting of two concentric tubes. The product flows through the inner tube while the service flows through the space between the two tubes.

### APPLICATIONS

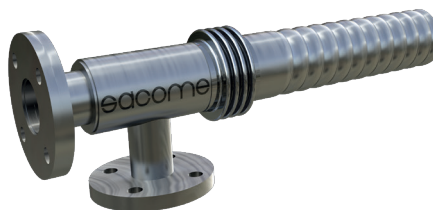
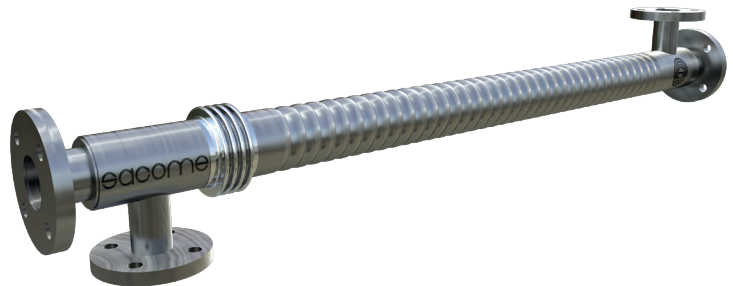
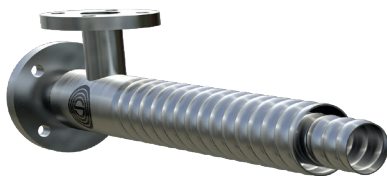
Heating or cooling products such as oils, effluents, sewage, waste water, sludge, slurry, among others.

### ADVANTAGES OF CORRUGATION

- HYGIENIC PROFILE
- DIFFERENT CORRUGATION GEOMETRIES (HARD/SOFT/PLAIN)
- TURBULENT FLOW (LOWER REYNOLDS NUMBER THAN FOR SMOOTH TUBES)
- HIGHER HEAT TRANSFER COEFFICIENTS AND LOWER EXCHANGE AREA
- HOMOGENEOUS THERMAL TREATMENT
- LOWER FOULING
- SHORTER RESIDENCE TIMES
- LONGER RUNNING TIMES

### ADVANTAGES OF TUBULAR HEAT EXCHANGER

- LOW MAINTENANCE COSTS
- HIGH WORKING PRESSURES
- HIGH WORKING TEMPERATURES
- PROCESSING OF PARTICULATE OR FIBRE PRODUCTS
- EASY INSPECTION AND DISASSEMBLY
- HIGH SECURITY IN ASEPTIC PROCESSES
- EASY TO ENLARGE



Discover all the advantages of corrugation in tubular heat exchangers  
[sacome.com/corrugated-shell-and-tube-heat-exchangers](http://sacome.com/corrugated-shell-and-tube-heat-exchangers)

www

## SACOME HEAT EXCHANGER TYPE DEFINITION

I-TF20-I-1-52/35-6000-304/316L-H →

INDUSTRIAL LINE

TF20

TUBE IN TUBE

NOT REMOVABLE INNER TUBE

0/1

WITHOUT / WITH EXPANSION JOINT

52

Ø SHELL (mm)

35

Ø INNER TUBE (mm)

6000

NOMINAL LENGTH (mm)

304

SHELL SIDE MATERIAL

316L

TUBE SIDE MATERIAL

H/S/P

CORRUIGATION INDICATOR

(HARD / SOFT/ PLAIN)

### STANDARD DESIGN CONDITIONS

Design temperature

**180 °C**

Design pressure

**10 barg**

For higher design pressures or temperatures as well as hazardous fluids, the heat exchangers can be checked according to AD 2000 Merkblätter, ASME VIII Div.1, PD 5500, EN13445 or by Finite Elements Analysis and CE certificated by individual inspection modules.

\* Included: 3.1 Quality certificate and CE Marking according to 2014/68/UE.

### STANDARD MEASURES

Shell side diameter

**25 mm – 219,1 mm**

Inner tube diameter

**≥ 16 mm**

Length

**1-1.5-2-3-6 m**

\* Other available sizes under request.

### MATERIALS

Shell & Tubes

**Stainless Steel 304 or 316L**

\* Other materials available on request (2205, 2507, 254 SMO among others)

### AVAILABLE CONNECTIONS

**Flange**

\* Other connections available on request.

### SURFACE FINISH

External

**Matt**

### OPTIONS

#### INSULATION

Mineral wool coated in 304 stainless steel metal sheet.

#### INTERCONNECTIONS

In case the equipment contains several units in series, SACOME can provide the interconnections for the product channel and the service channel.

#### FRAME

In 304 stainless steel. The type and shape of the frame will be selected to fit the needs of each project. If required, equipment may be sloping for better drainage.



## SACOME

Ctra. de La Unión Km. 3,5 | 30399 Vista Alegre - Cartagena | Murcia | Spain  
Phone: +34 968321411 | Fax: +34 968500003 | Email: [sacome@sacome.com](mailto:sacome@sacome.com) | [www.sacome.com](http://www.sacome.com)